

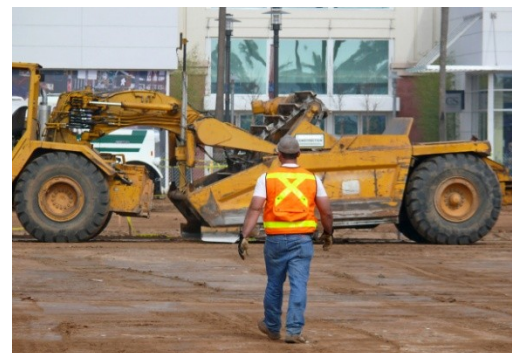
Web Work - Works in Construction

Within the USA, Public construction is a \$300 Million dollar industry. **Zachry Construction Corporation** is one of the top 25 companies driving this massive industry. Zachry, with over 5,500 public and private projects completed across the country and around the globe, has an enormous asset inventory requiring an advanced Maintenance Management tool and a highly dynamic, flexible company to deliver and support it.

In 2008 Zachry went to tender for a CMMS and out of the 20 plus systems evaluated, Web Work was selected.

The goals of this first phase CMMS implementation was to:

- ✓ consolidate the many satellite programs that comprised the maintenance and operations systems
- ✓ lower operational costs for repairs and maintenance
- ✓ acquire field level equipment data, analyze and send it to corporate systems electronically
- ✓ provide enterprise reporting for maintenance and cost analysis
- ✓ supply projections to assist in future construction projects



The Zachry Equipment department was looking for an accurate and user-friendly system that would improve their overall equipment data collection, integration and business process which in turn would improve utilization, productivity and assist in lowering costs. Moreover, the CMMS would allow their operations to become more accountable and transparent.

During the evaluation stage of the project the Web Work CMMS stood alone as the solution to best fit with Zachry's needs. The highly dynamic implementation strategy employed by Tero allowed the Web Work CMMS to be fully integrated and implemented according to Zachry's requirements.



Dynamic Corporate Data and Reporting

With assets spread around the country, Zachry Construction Corp. requires a highly mobile, flexible CMMS solution that interfaces to a number of corporate systems. Bringing information from the field into corporate systems that is usable and relevant is a highly important task of the Web Work CMMS in any operation, but even more so for Zachry. In order to evaluate current operational costs and plan for future projects, the CMMS must provide accurate field data. Web Work provides a great deal of this information through a number of entry points or interfaces.

Web Work not only sends data to corporate systems but also retrieves data from the highly mobile assets of Zachry. Perhaps one of the most important interfaces to Web Work from the field is through Zachry's QUALCOM GPS.

Most equipment at Zachry has a QUALCOM GPS unit that will provide a **Meter Reading** and a **Location** of an asset. That information is sent to Web Work to provide important asset location information and to trigger Preventive Maintenance (PM) tasks. PM tasks are triggered through a combination of Meter Readings and Calendars.



Another extremely important feature of this interface involves varied tax rates on Zachry's assets as they operate and move through different States and County's with dissimilar tax laws.

Scheduling Maintenance No Small Task

The Web Work CMMS, as with most other CMMS programs, is equipped with a Location and Equipment module tightly coupled with each other and the additional modules of the program (labour, work management etc.). For Zachry however the equipment is constantly moving for each project and requires an easy to use yet highly effective equipment maintenance scheduling module.

The Web Work system was implemented to provide Zachry with the ability to schedule, assign or allocate, and track each asset move, recording all costs and maintenance data along the way and upload this data to finance. Using the custom reporting module in Web Work Zachry can create current "snap shots" of equipment location and expenses, as well as detailed historical reports.

About Zachry Construction Corporation

<http://www.zachrycorp.com>

Texas based with family roots, Zachry Construction Corporation offers general construction, project development and construction management services. Our unequaled financial strength and bonding capacity consistently puts us in the Top 25 of U.S. construction firms.



Based in San Antonio, we are one of the country's largest direct-hire and merit shop contractors and suitable for projects at all levels. As leaders in safety and performance, we deliver on time and within budget. Experienced workers, a unique family culture and innovation have nurtured long-term relationships for the past 85 years. We're three generations strong, good at what we do and caring for the communities we build.

About Tero Consulting Ltd.

<http://www.tero.ca>

Tero Consulting Ltd. is the developer of the Web Work true web based CMMS. Web Work was the world's first 100% web based CMMS designed for asset management and maintenance. Today, Web Work is used by military, industry and government organizations the world over. For over 30 years clients have been relying on Tero for advanced CMMS applications.